

Knowledge Organiser: Frozen Kingdom

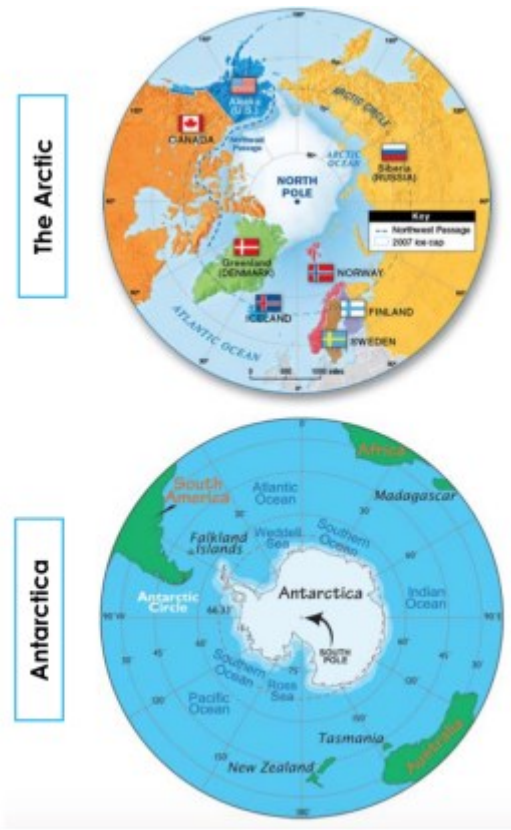
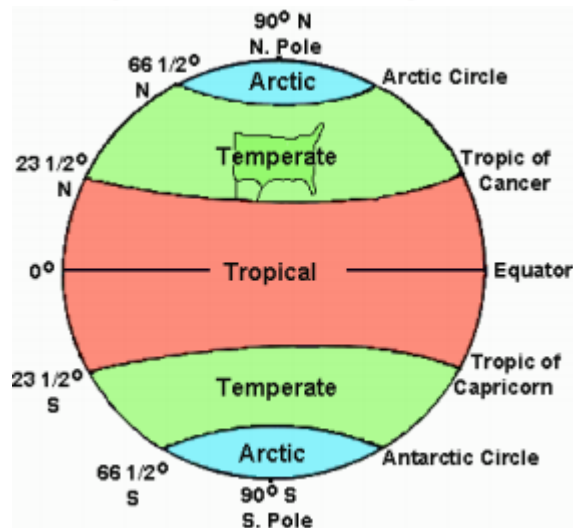
The Arctic region

The Arctic region is found in the Northern Hemisphere and includes parts of Canada, Alaska, Russia, Finland, Sweden, Norway, Greenland and Iceland along with the Arctic Ocean. Temperatures can reach -68°C in the winter months, making it one of the coldest places on Earth. The Arctic region is home to small populations of people (Inuits) alongside an amazing variety of plants and animals, including the polar bear, the arctic fox and the walrus.



The Antarctic region

The Antarctic region is found in the Southern Hemisphere and it is the world's fifth largest continent. It is covered in an ice sheet that is up to 4.8km thick. It is the coldest, driest, highest and windiest continent on Earth. Temperatures can reach -89°C , there is no precipitation and wind speeds can reach 80km per hour in some areas. There are no people that live permanently in the Antarctic region and only two native kinds of flowering plants, but it has a rich sea life, including the emperor penguin, humpback whale and leopard seal.



Knowledge Organiser: Frozen Kingdom

KEY VOCABULARY & SPELLINGS	
Continent	The world's main continuous expanses of land (Europe, Asia, Africa, North and South America, Australia, Antarctica)
Climate	A long term pattern of the weather conditions.
Climate Change	Big change in the weather over a long time, now made worse by human pollution.
Endurance	A three-masted wooden vessel in which Sir Ernest Shackleton sailed for the Antarctic on the 1914 Imperial Trans- Antarctic Expedition..
Explorer	A person who explores a new or an unfamiliar place.
Equator	The imaginary east-west line encircling the Earth midway between the North and South poles.
Expedition	A journey undertaken by a group of people with a particular purpose
Global Warming	Change in the climate that makes the world warm up. Global warming is caused by pollution made by humans.
Navigate	To move through a particular course in an unfamiliar area.
Southern Hemisphere	The half sphere of Earth which is South of the equator.
Pack Ice	A large area of ice floating in the sea, formed by smaller pieces freezing together.
Pollution	Harmful chemicals or gas- es that spoil the environ- ment.



Ernest Shackleton

An explorer who in 1914, chartered an expedition to Antarctica. Disaster struck when his ship, the Endurance, was crushed by ice. He and his crew drifted on sheets of ice for months until they reached Elephant Island. Shackleton eventually rescued his crew, all of whom survived the ordeal. He later died while setting out on another Antarctic expedition.

Inuit People

The Inuit people live in the far northern areas of [Alaska](#), Canada, Siberia, and Greenland. They originally made their home along the Alaskan coast, but migrated to other areas. Everything about the lives of the Inuit is influenced by the cold [tundra](#) climate in which they live.

